

Santa Rosa Ave between Wilkinson Rd and Santa Anita Ave
November 23, 2020 To November 27, 2020



The data presented here is for information purposes only and should not be considered authoritative for construction, geotechnical, engineering, navigational, legal, or other site-specific uses. The information shared is owned by the Transportation Division of the Engineering Department at the District of Saanich. Accuracy is not guaranteed.

Start Date: 23-Nov-20
 Start Time: 20:00
 Station ID: R0979-01

Location 1: Santa Rosa Ave between Wilkinson Rd and Santa Anita Ave

Note:

DATE:	November 23, 2020		November 24, 2020		November 25, 2020		November 26, 2020		November 27, 2020		WK AVG		WK AVG	HOURLY
	MON		TUE		WED		THURS		FRI		EB	WB	CH 1+2	%
Time:	EB	WB	EB	WB	EB	WB	EB	WB	EB	WB	EB	WB		
12-1 AM			1	1	3	0	1	1			2	1	2	0.4%
1-2 AM			2	0	3	0	1	0			2	0	2	0.4%
2-3 AM			0	1	1	0	1	0			1	0	1	0.2%
3-4 AM			0	0	0	0	0	0			0	0	0	0.0%
4-5 AM			3	1	2	1	2	1			2	1	3	0.6%
5-6 AM			1	0	0	0	0	0			0	0	0	0.1%
6-7 AM			6	3	3	1	2	2			4	2	6	1.0%
7-8 AM			13	7	14	8	18	10			15	8	23	4.3%
8-9 AM			41	50	50	49	47	49			46	49	95	17.4%
9-10 AM			28	14	17	10	17	12			21	12	33	6.0%
10-11 AM			8	6	14	10	8	9			10	8	18	3.3%
11-12 PM			17	22	15	10	15	9			16	14	29	5.3%
12-1 PM			23	25	12	20	13	18			16	21	37	6.7%
1-2 PM			14	13	22	25	13	14			16	17	34	6.1%
2-3 PM			41	60	38	42	34	43			38	48	86	15.7%
3-4 PM			26	20	23	24	32	20			27	21	48	8.8%
4-5 PM			17	21	17	21	13	24			16	22	38	6.9%
5-6 PM			7	15	17	24	14	18			13	19	32	5.8%
6-7 PM			6	3	9	7	13	18			9	9	19	3.4%
7-8 PM			5	10	8	8	10	9			8	9	17	3.0%
8-9 PM	2	6	6	9	4	7	5	4			4	7	11	2.0%
9-10 PM	1	3	1	1	2	6	5	4			2	4	6	1.0%
10-11 PM	1	1	1	1	1	1	0	2			1	1	2	0.4%
11-12 AM	2	3	3	6	3	2	2	5			3	4	7	1.2%
LANES			270	289	278	276	266	272			270	278	548	100.0%
TOTAL			559		554		538				550			
	MON		TUE		WED		THURS		FRI		WK AVG			

PEAK HOUR					TOTAL VEHICALS-PEAK PERIODS		2 HOUR PEAK INTERVALS			
MAX. 7 - 9 am PEAK HOUR	95	⇒	17.4%	between 8-9 AM	254	⇒ 6 HR TOTAL	2 HR AM (7 - 9 AM)			
MAX. 7 - 11 am PEAK HOUR	95	⇒	17.4%	between 8-9 AM	188	⇒ 4 HR TOTAL	VEH / HR	VEH / 2HR	2 HR %	
							7-8 AM	23	119	21.6%
							8-9 AM	95		
MAX. 11 am - 1 pm PEAK HOUR	37	⇒	6.7%	between 12-1 PM	24 HOUR FACTORS					
MAX. 11 am - 3 pm PEAK HOUR	86	⇒	15.7%	between 2-3 PM						
MAX. 4 - 6 pm PEAK HOUR	38	⇒	6.9%	between 4-5 PM	2.16	⇒ 6-24 HR FACT.	2 HR NOON (11 - 1 PM)			
MAX. 3 - 6 pm PEAK HOUR	48	⇒	8.8%	between 3-4 PM	2.92	⇒ 4-24 HR FACT.	VEH / HR	VEH / 2HR	2 HR %	
							11-12 PM	29	66	12.1%
							12-1 PM	37		
							2 HR PM (4 - 6 PM)			
							VEH / HR	VEH / 2HR	2 HR %	
							4-5 PM	38	69	12.6%
							5-6 PM	32		

Santa Rosa Ave between Wilkinson Rd and Santa Anita Ave

Westbound

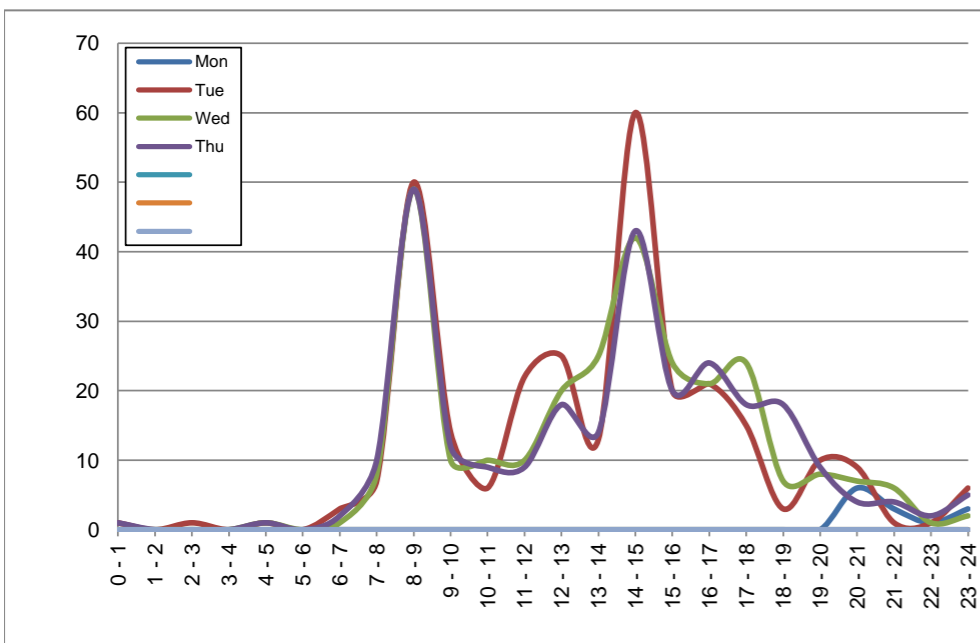
November 23, 2020 to November 26, 2020

Hourly Volumes

Time Period	Mon	Tue	Wed	Thu			
	Nov 23	Nov 24	Nov 25	Nov 26			
0 - 1		1	0	1			
1 - 2		0	0	0			
2 - 3		1	0	0			
3 - 4		0	0	0			
4 - 5		1	1	1			
5 - 6		0	0	0			
6 - 7		3	1	2			
7 - 8		7	8	10			
8 - 9		50	49	49			
9 - 10		14	10	12			
10 - 11		6	10	9			
11 - 12		22	10	9			
12 - 13		25	20	18			
13 - 14		13	25	14			
14 - 15		60	42	43			
15 - 16		20	24	20			
16 - 17		21	21	24			
17 - 18		15	24	18			
18 - 19		3	7	18			
19 - 20		10	8	9			
20 - 21	6	9	7	4			
21 - 22	3	1	6	4			
22 - 23	1	1	1	2			
23 - 24	3	6	2	5			
Day Total		289	276	272			

15-Minute Volumes

Time Start	Mon	Tue	Wed	Thu			
	Nov 23	Nov 24	Nov 25	Nov 26			
0:00		1	0	0			
0:15		0	0	1			
0:30		0	0	0			
0:45		0	0	0			
1:00		0	0	0			
1:15		0	0	0			
1:30		0	0	0			
1:45		0	0	0			
2:00		0	0	0			
2:15		0	0	0			
2:30		0	0	0			
2:45		1	0	0			
3:00		0	0	0			
3:15		0	0	0			
3:30		0	0	0			
3:45		0	0	0			
4:00		0	0	0			
4:15		0	0	0			
4:30		1	0	0			
4:45		0	1	1			
5:00		0	0	0			
5:15		0	0	0			
5:30		0	0	0			
5:45		0	0	0			
6:00		0	1	0			
6:15		0	0	0			
6:30		1	0	1			
6:45		2	0	1			
7:00		0	1	0			
7:15		1	1	2			
7:30		3	3	4			
7:45		3	3	4			
8:00		4	4	2			
8:15		9	8	9			
8:30		34	31	31			
8:45		3	6	7			
9:00		5	3	4			
9:15		2	2	2			
9:30		3	2	3			
9:45		4	3	3			
10:00		1	3	2			
10:15		1	2	1			
10:30		3	1	4			
10:45		1	4	2			
11:00		3	5	4			
11:15		4	2	1			
11:30		7	3	0			
11:45		8	0	4			
12:00			5	4			
12:15			6	5			
12:30			4	3			
12:45			10	8			
13:00			3	3			
13:15			1	5			
13:30			4	6			
13:45			5	11			
14:00			4	4			
14:15			12	9			
14:30			26	17			
14:45			18	12			
15:00			6	3			
15:15			3	8			
15:30			3	3			
15:45			8	10			
16:00			4	10			
16:15			9	5			
16:30			4	5			
16:45			4	1			
17:00			7	7			
17:15			4	7			
17:30			4	5			
17:45			0	5			
18:00			0	5			
18:15			1	0			
18:30			1	1			
18:45			1	1			
19:00			3	1			
19:15			4	2			
19:30			2	2			
19:45			1	3			
20:00	1	4	2	1			
20:15	2	4	3	2			
20:30	3	0	1	1			
20:45	0	1	1	0			
21:00	2	0	1	0			
21:15	0	1	3	3			
21:30	1	0	0	1			
21:45	0	0	2	0			
22:00	0	0	1	1			
22:15	0	0	0	0			
22:30	0	0	0	1			
22:45	1	1	0	0			
23:00	0	0	0	0			
23:15	0	0	0	1			
23:30	1	1	0	1			
23:45	2	5	2	3			



Site notes:

Santa Rosa Ave between Wilkinson Rd and Santa Anita Ave

Eastbound

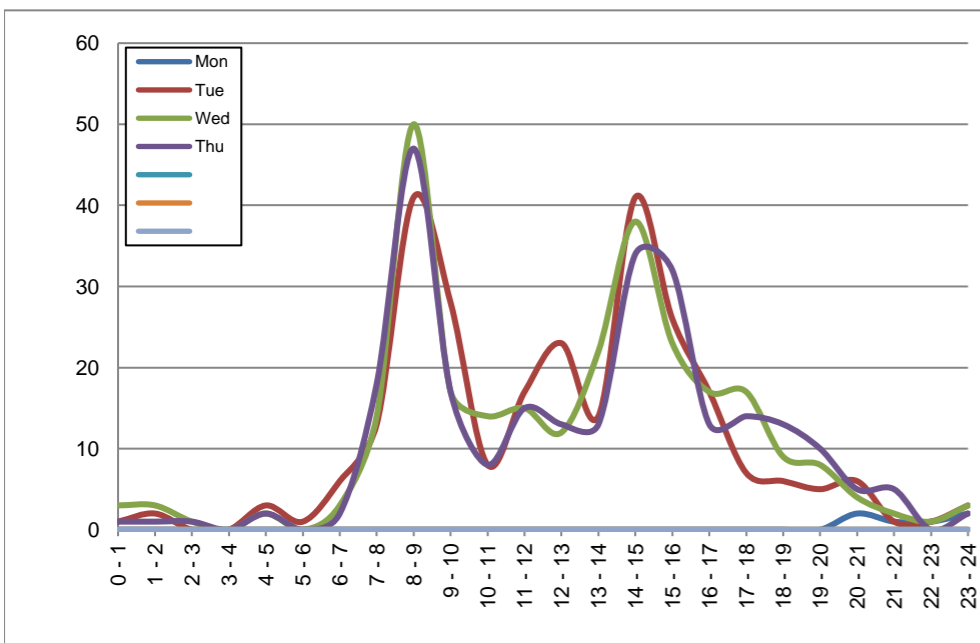
November 23, 2020 to November 26, 2020

Hourly Volumes

Time Period	Mon	Tue	Wed	Thu			
	Nov 23	Nov 24	Nov 25	Nov 26			
0 - 1		1	3	1			
1 - 2		2	3	1			
2 - 3		0	1	1			
3 - 4		0	0	0			
4 - 5		3	2	2			
5 - 6		1	0	0			
6 - 7		6	3	2			
7 - 8		13	14	18			
8 - 9		41	50	47			
9 - 10		28	17	17			
10 - 11		8	14	8			
11 - 12		17	15	15			
12 - 13		23	12	13			
13 - 14		14	22	13			
14 - 15		41	38	34			
15 - 16		26	23	32			
16 - 17		17	17	13			
17 - 18		7	17	14			
18 - 19		6	9	13			
19 - 20		5	8	10			
20 - 21	2	6	4	5			
21 - 22	1	1	2	5			
22 - 23	1	1	1	0			
23 - 24	2	3	3	2			
Day Total		270	278	266			

15-Minute Volumes

Time Start	Mon	Tue	Wed	Thu				Time Start	Mon	Tue	Wed	Thu			
	Nov 23	Nov 24	Nov 25	Nov 26					Nov 23	Nov 24	Nov 25	Nov 26			
0:00		1	2	1				12:00		7	1	5			
0:15		0	1	0				12:15		2	1	3			
0:30		0	0	0				12:30		7	5	3			
0:45		0	0	0				12:45		7	5	2			
1:00		1	0	1				13:00		6	8	6			
1:15		0	1	0				13:15		0	3	3			
1:30		0	2	0				13:30		3	5	3			
1:45		1	0	0				13:45		5	6	1			
2:00		0	0	1				14:00		4	11	10			
2:15		0	0	0				14:15		8	5	6			
2:30		0	0	0				14:30		4	2	3			
2:45		0	1	0				14:45		25	20	15			
3:00		0	0	0				15:00		10	6	12			
3:15		0	0	0				15:15		5	9	8			
3:30		0	0	0				15:30		5	6	8			
3:45		0	0	0				15:45		6	2	4			
4:00		0	0	0				16:00		5	5	0			
4:15		1	2	2				16:15		2	3	3			
4:30		2	0	0				16:30		4	2	5			
4:45		0	0	0				16:45		6	7	5			
5:00		0	0	0				17:00		0	3	6			
5:15		0	0	0				17:15		2	5	2			
5:30		0	0	0				17:30		2	6	3			
5:45		1	0	0				17:45		3	3	3			
6:00		1	0	0				18:00		1	4	5			
6:15		1	0	0				18:15		0	3	4			
6:30		1	2	1				18:30		3	0	3			
6:45		3	1	1				18:45		2	2	1			
7:00		2	4	3				19:00		0	3	3			
7:15		3	2	6				19:15		1	2	2			
7:30		6	4	6				19:30		2	2	3			
7:45		2	4	3				19:45		2	1	2			
8:00		1	1	1				20:00	1	2	0	0			
8:15		5	8	6				20:15	0	2	2	3			
8:30		20	22	29				20:30	1	2	1	0			
8:45		15	19	11				20:45	0	0	1	2			
9:00		12	5	8				21:00	1	0	1	2			
9:15		10	6	3				21:15	0	1	0	2			
9:30		4	3	3				21:30	0	0	0	0			
9:45		2	3	3				21:45	0	0	1	1			
10:00		2	2	0				22:00	0	1	1	0			
10:15		1	3	4				22:15	1	0	0	0			
10:30		3	4	2				22:30	0	0	0	0			
10:45		2	5	2				22:45	0	0	0	0			
11:00		3	5	4				23:00	1	0	2	0			
11:15		6	5	5				23:15	0	2	0	0			
11:30		6	2	1				23:30	0	0	0	1			
11:45		2	3	5				23:45	1	1	1	1			



Site notes:

Vehicle Speed Summary

Saanich Engineering Department

Count Id: [R0979-01](#)

Filename: [Santa Rosa Ave between Wilkinson Rd and Santa Anita Ave-Nov-2020.xlsm](#)

Location: Santa Rosa Ave between Wilkinson Rd and Santa Anita Ave

Note:

Direction: **East-West**

Dates: **November 23, 2020 To November 27, 2020**

Filtered data

AVG. SPEED	18 mph	29 km/h
50 % SPEED	18 mph	29 km/h
85 % SPEED	23 mph	37 km/h
95 % SPEED	26 mph	42 km/h

Location Map



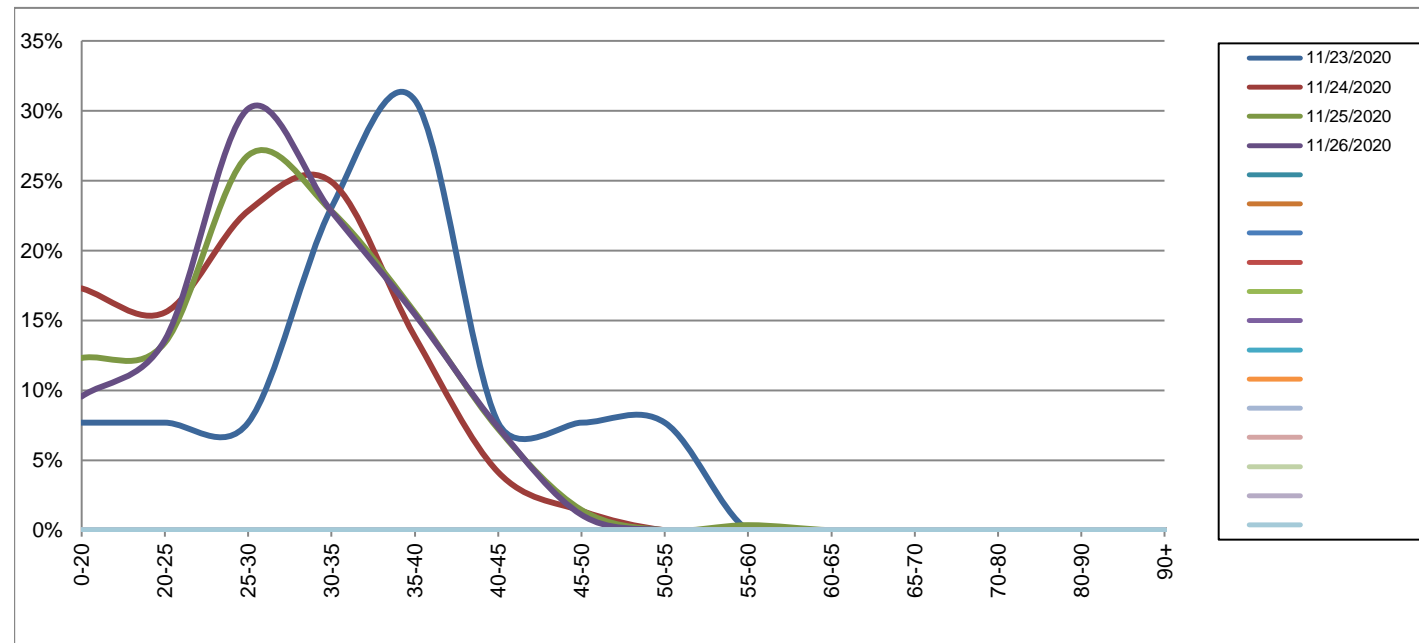
Santa Rosa Ave between Wilkinson Rd and Santa Anita Ave

Westbound
November 23, 2020 to November 26, 2020

Daily Speed Bin Percentages															Daily Speed Bin Volumes														Total	Avg.
Bin #	1	2	3	4	5	6	7	8	9	10	11	12	13	14	1	2	3	4	5	6	7	8	9	10	11	12	13	14	Volume	Speed
Bin Speeds	0-20	20-25	25-30	30-35	35-40	40-45	45-50	50-55	55-60	60-65	65-70	70-80	80-90	90+	0-20	20-25	25-30	30-35	35-40	40-45	45-50	50-55	55-60	60-65	65-70	70-80	80-90	90+		
11/23/2020	7.7%	7.7%	7.7%	23.1%	30.8%	7.7%	7.7%	7.7%	0.0%	0.0%	0.0%	0.0%	0.0%	0.0%	1	1	1	3	4	1	1	1	0	0	0	0	0	0	13	35
11/24/2020	17.3%	15.6%	22.8%	24.9%	13.8%	4.2%	1.4%	0.0%	0.0%	0.0%	0.0%	0.0%	0.0%	0.0%	50	45	66	72	40	12	4	0	0	0	0	0	0	0	289	27
11/25/2020	12.3%	13.4%	26.8%	22.8%	15.6%	7.2%	1.4%	0.0%	0.4%	0.0%	0.0%	0.0%	0.0%	0.0%	34	37	74	63	43	20	4	0	1	0	0	0	0	0	276	29
11/26/2020	9.6%	13.6%	30.1%	22.8%	15.4%	7.4%	1.1%	0.0%	0.0%	0.0%	0.0%	0.0%	0.0%	0.0%	26	37	82	62	42	20	3	0	0	0	0	0	0	0	272	29
Total	13.1%	14.1%	26.2%	23.5%	15.2%	6.2%	1.4%	0.1%	0.1%	0.0%	0.0%	0.0%	0.0%	0.0%	111	120	223	200	129	53	12	1	1	0	0	0	0	0	850	28

Speed Data Summary

Bin #	1	2	3	4	5	6	7	8	9	10	11	12	13	14	Total
Bin Speeds	0-20	20-25	25-30	30-35	35-40	40-45	45-50	50-55	55-60	60-65	65-70	70-80	80-90	90+	
Survey Total	111	120	223	200	129	53	12	1	1	0	0	0	0	0	850
% Total	13.1%	14.1%	26.2%	23.5%	15.2%	6.2%	1.4%	0.1%	0.1%	0.0%	0.0%	0.0%	0.0%	0.0%	100%
Accumulated %	13.1%	27.2%	53.4%	76.9%	92.1%	98.4%	99.8%	99.9%	100.0%	100.0%	100.0%	100.0%	100.0%	100.0%	
Inverse Accum. %	86.9%	72.8%	46.6%	23.1%	7.9%	1.6%	0.2%	0.1%	0.0%	0.0%	0.0%	0.0%	0.0%	0.0%	
Average Speed	28 KM/H														



Site notes:

Santa Rosa Ave between Wilkinson Rd and Santa Anita Ave

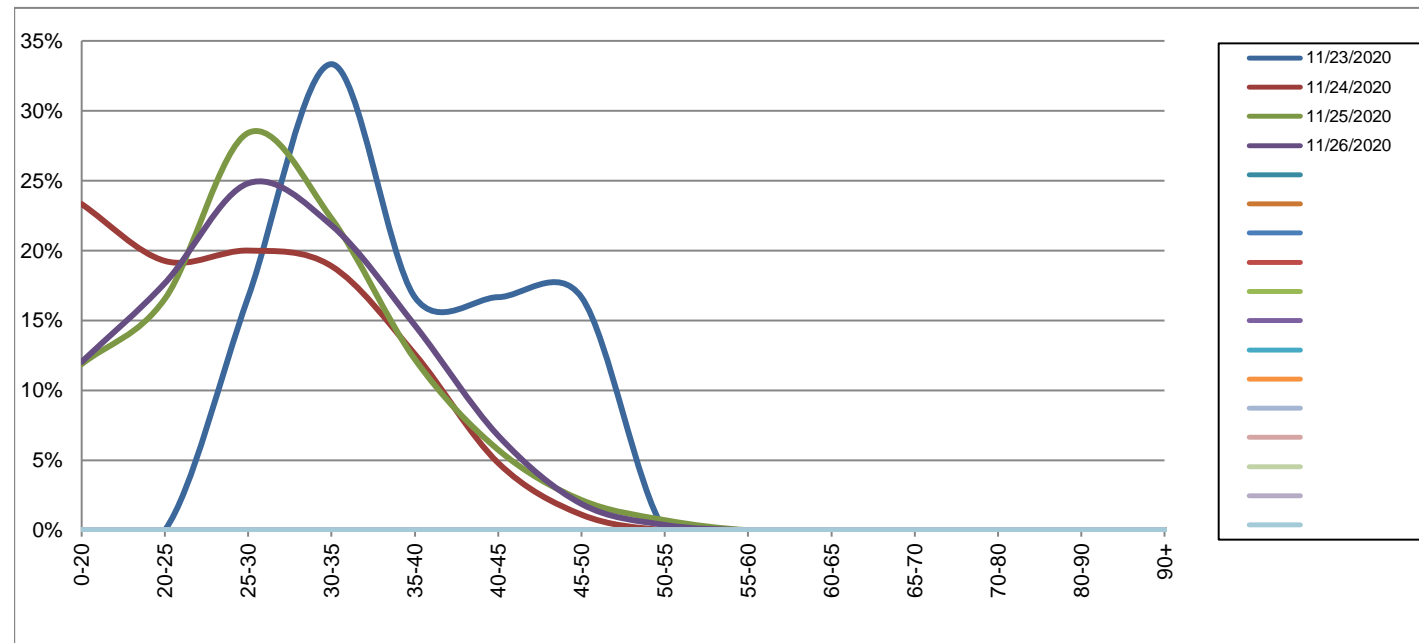
Eastbound

November 23, 2020 to November 26, 2020

Daily Speed Bin Percentages															Daily Speed Bin Volumes														Total	Avg.
Bin #	1	2	3	4	5	6	7	8	9	10	11	12	13	14	1	2	3	4	5	6	7	8	9	10	11	12	13	14	Volume	Speed
Bin Speeds	0-20	20-25	25-30	30-35	35-40	40-45	45-50	50-55	55-60	60-65	65-70	70-80	80-90	90+	0-20	20-25	25-30	30-35	35-40	40-45	45-50	50-55	55-60	60-65	65-70	70-80	80-90	90+		
11/23/2020	0.0%	0.0%	16.7%	33.3%	16.7%	16.7%	16.7%	0.0%	0.0%	0.0%	0.0%	0.0%	0.0%	0.0%	0	0	1	2	1	1	1	0	0	0	0	0	0	0	6	37
11/24/2020	23.3%	19.3%	20.0%	18.9%	12.6%	4.8%	1.1%	0.0%	0.0%	0.0%	0.0%	0.0%	0.0%	0.0%	63	52	54	51	34	13	3	0	0	0	0	0	0	0	270	26
11/25/2020	11.9%	16.5%	28.4%	22.3%	12.2%	5.8%	2.2%	0.7%	0.0%	0.0%	0.0%	0.0%	0.0%	0.0%	33	46	79	62	34	16	6	2	0	0	0	0	0	0	278	28
11/26/2020	12.0%	17.7%	24.8%	21.8%	14.7%	6.8%	1.9%	0.4%	0.0%	0.0%	0.0%	0.0%	0.0%	0.0%	32	47	66	58	39	18	5	1	0	0	0	0	0	0	266	29
Total	15.6%	17.7%	24.4%	21.1%	13.2%	5.9%	1.8%	0.4%	0.0%	0.0%	0.0%	0.0%	0.0%	0.0%	128	145	200	173	108	48	15	3	0	0	0	0	0	0	820	28

Speed Data Summary

Bin #	1	2	3	4	5	6	7	8	9	10	11	12	13	14	Total
Bin Speeds	0-20	20-25	25-30	30-35	35-40	40-45	45-50	50-55	55-60	60-65	65-70	70-80	80-90	90+	
Survey Total	128	145	200	173	108	48	15	3	0	0	0	0	0	0	820
% Total	15.6%	17.7%	24.4%	21.1%	13.2%	5.9%	1.8%	0.4%	0.0%	0.0%	0.0%	0.0%	0.0%	0.0%	100%
Accumulated %	15.6%	33.3%	57.7%	78.8%	92.0%	97.8%	99.6%	100.0%	100.0%	100.0%	100.0%	100.0%	100.0%	100.0%	
Inverse Accum. %	84.4%	66.7%	42.3%	21.2%	8.0%	2.2%	0.4%	0.0%	0.0%	0.0%	0.0%	0.0%	0.0%	0.0%	
Average Speed	28 KM/H														



Site notes:

Santa Rosa Ave between Wilkinson Rd and Santa Anita Ave

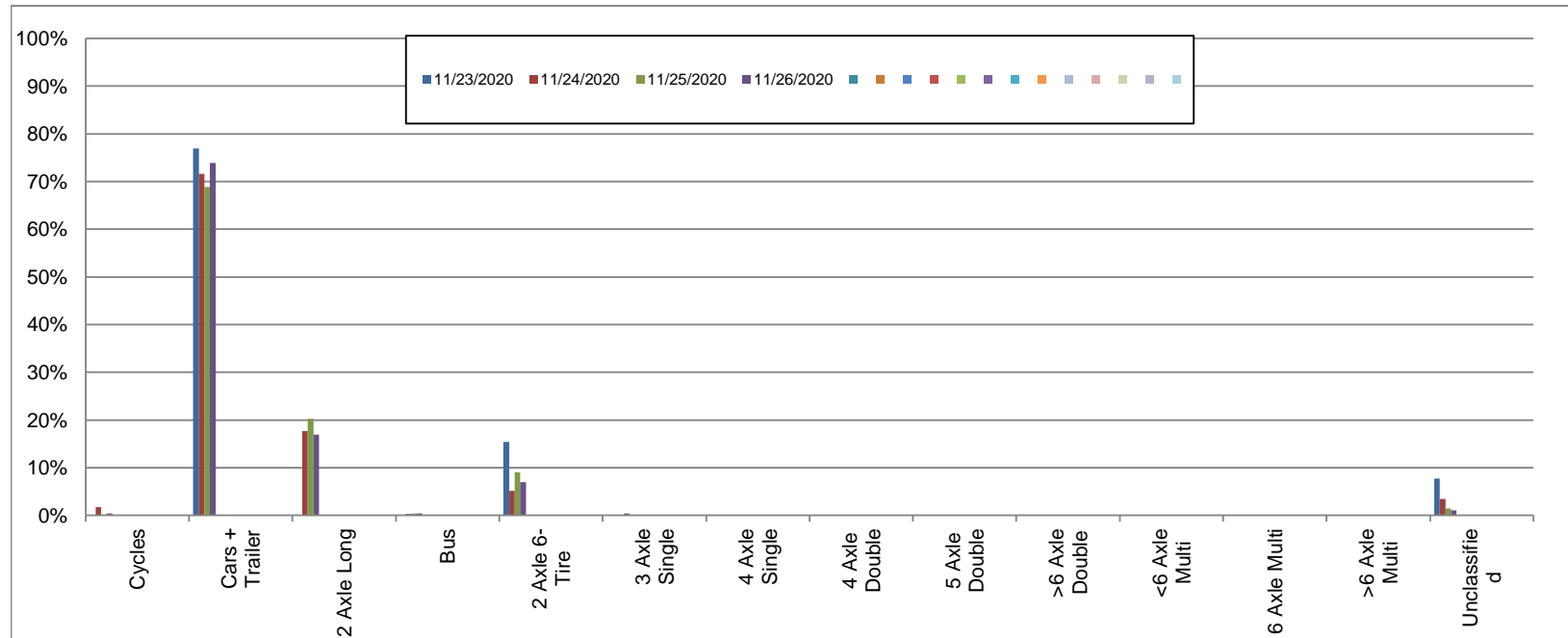
Westbound

November 23, 2020 to November 26, 2020

Daily Class Bin Percentages															Daily Class Bin Volumes															
Bin #	1	2	3	4	5	6	7	8	9	10	11	12	13	14	1	2	3	4	5	6	7	8	9	10	11	12	13	14	Total Volume	
Bin Class	Cycles	Cars + Trailer	2 Axle Long	Bus	2 Axle 6-Tire	3 Axle Single	4 Axle Single	4 Axle Double	5 Axle Double	>6 Axle Double	<6 Axle Multi	6 Axle Multi	>6 Axle Multi	Unclassified	Cycles	Cars + Trailer	2 Axle Long	Bus	2 Axle 6-Tire	3 Axle Single	4 Axle Single	4 Axle Double	5 Axle Double	>6 Axle Double	<6 Axle Multi	6 Axle Multi	>6 Axle Multi	Unclassified		
11/23/2020	0.0%	76.9%	0.0%	0.0%	15.4%	0.0%	0.0%	0.0%	0.0%	0.0%	0.0%	0.0%	0.0%	7.7%	0	10	0	0	2	0	0	0	0	0	0	0	0	0	1	13
11/24/2020	1.7%	71.6%	17.6%	0.3%	5.2%	0.0%	0.0%	0.0%	0.0%	0.0%	0.0%	0.0%	0.0%	3.5%	5	207	51	1	15	0	0	0	0	0	0	0	0	0	10	289
11/25/2020	0.0%	68.8%	20.3%	0.4%	9.1%	0.0%	0.0%	0.0%	0.0%	0.0%	0.0%	0.0%	0.0%	1.4%	0	190	56	1	25	0	0	0	0	0	0	0	0	0	4	276
11/26/2020	0.4%	73.9%	16.9%	0.4%	7.0%	0.4%	0.0%	0.0%	0.0%	0.0%	0.0%	0.0%	0.0%	1.1%	1	201	46	1	19	1	0	0	0	0	0	0	0	0	3	272
Total	0.7%	71.5%	18.0%	0.4%	7.2%	0.1%	0.0%	0.0%	0.0%	0.0%	0.0%	0.0%	0.0%	2.1%	6	608	153	3	61	1	0	0	0	0	0	0	0	18	850	

Class Data Summary

Bin #	1	2	3	4	5	6	7	8	9	10	11	12	13	14	Total Volume
Bin Class	Cycles	Cars + Trailer	2 Axle Long	Bus	2 Axle 6-Tire	3 Axle Single	4 Axle Single	4 Axle Double	5 Axle Double	>6 Axle Double	<6 Axle Multi	6 Axle Multi	>6 Axle Multi	Unclassified	Total Volume
Survey Total	6	608	153	3	61	1	0	0	0	0	0	0	0	18	850
% Total	0.7%	71.5%	18.0%	0.4%	7.2%	0.1%	0.0%	0.0%	0.0%	0.0%	0.0%	0.0%	0.0%	2.1%	100%
Accumulated %	0.7%	72.2%	90.2%	90.6%	97.8%	97.9%	97.9%	97.9%	97.9%	97.9%	97.9%	97.9%	97.9%	100.0%	
Inv. Accum. %	99.3%	27.8%	9.8%	9.4%	2.2%	2.1%	2.1%	2.1%	2.1%	2.1%	2.1%	2.1%	2.1%	0.0%	



Classification Descriptions

Bin #	Bin Description
1	Motorcycles
2	Passenger cars, including those with recreational trailers
3	2-axle pick-ups, vans, and RVs, including those with recreational trailers
4	Buses
5	2-axle, 6-tire single units
6	3-axle single units
7	4-axle single units
8	3-axle or 4-axle double unit
9	5-axle double unit
10	6-, 7-, or 8-axle double unit
11	5-axle multiple unit
12	6-axle multiple unit
13	7-or-more-axle multiple unit
14	Vehicles that could not be classified

Site notes:

Santa Rosa Ave between Wilkinson Rd and Santa Anita Ave

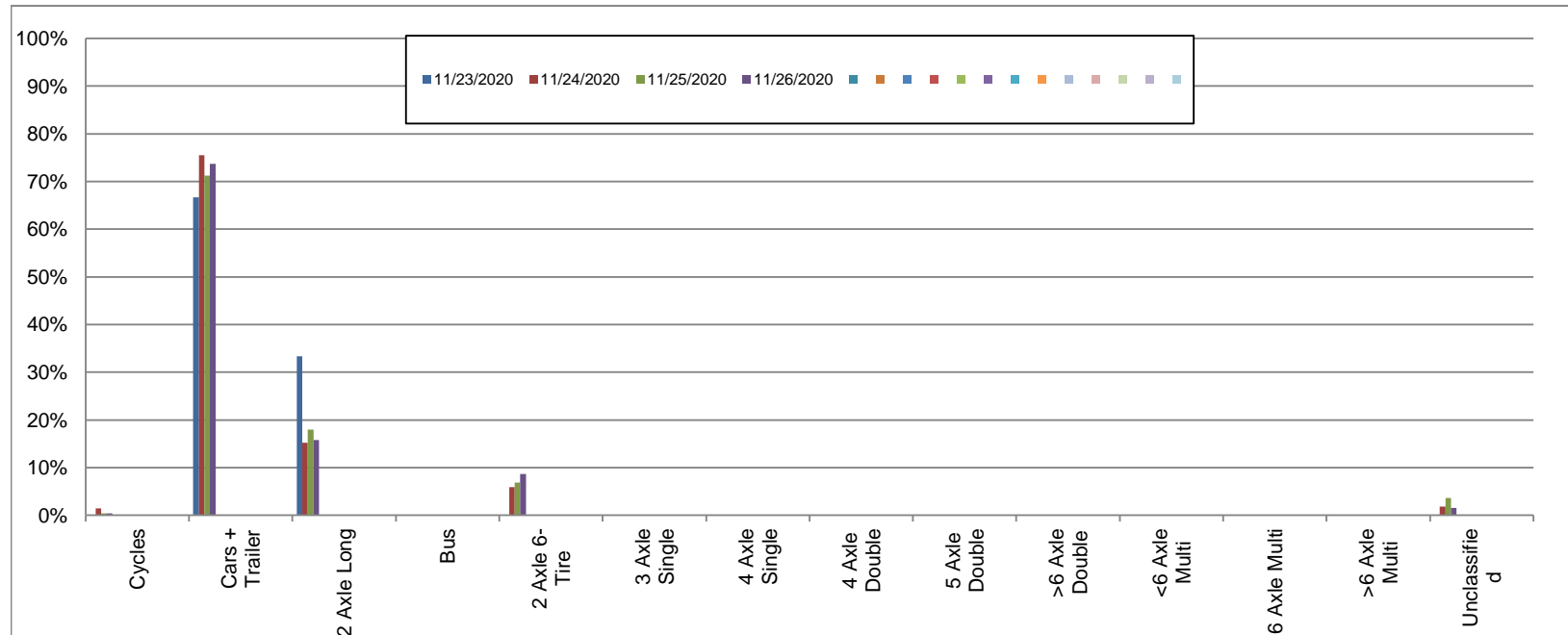
Eastbound

November 23, 2020 to November 26, 2020

Daily Class Bin Percentages															Daily Class Bin Volumes														
Bin #	1	2	3	4	5	6	7	8	9	10	11	12	13	14	1	2	3	4	5	6	7	8	9	10	11	12	13	14	Total Volume
Bin Class	Cycles	Cars + Trailer	2 Axle Long	Bus	2 Axle 6-Tire	3 Axle Single	4 Axle Single	4 Axle Double	5 Axle Double	>6 Axle Double	<6 Axle Multi	6 Axle Multi	>6 Axle Multi	Unclassified	Cycles	Cars + Trailer	2 Axle Long	Bus	2 Axle 6-Tire	3 Axle Single	4 Axle Single	4 Axle Double	5 Axle Double	>6 Axle Double	<6 Axle Multi	6 Axle Multi	>6 Axle Multi	Unclassified	
11/23/2020	0.0%	66.7%	33.3%	0.0%	0.0%	0.0%	0.0%	0.0%	0.0%	0.0%	0.0%	0.0%	0.0%	0.0%	0	4	2	0	0	0	0	0	0	0	0	0	0	0	6
11/24/2020	1.5%	75.6%	15.2%	0.0%	5.9%	0.0%	0.0%	0.0%	0.0%	0.0%	0.0%	0.0%	0.0%	1.9%	4	204	41	0	16	0	0	0	0	0	0	0	0	5	270
11/25/2020	0.4%	71.2%	18.0%	0.0%	6.8%	0.0%	0.0%	0.0%	0.0%	0.0%	0.0%	0.0%	0.0%	3.6%	1	198	50	0	19	0	0	0	0	0	0	0	0	10	278
11/26/2020	0.4%	73.7%	15.8%	0.0%	8.6%	0.0%	0.0%	0.0%	0.0%	0.0%	0.0%	0.0%	0.0%	1.5%	1	196	42	0	23	0	0	0	0	0	0	0	0	4	266
Total	0.7%	73.4%	16.5%	0.0%	7.1%	0.0%	0.0%	0.0%	0.0%	0.0%	0.0%	0.0%	0.0%	2.3%	6	602	135	0	58	0	0	0	0	0	0	0	0	19	820

Class Data Summary

Bin #	1	2	3	4	5	6	7	8	9	10	11	12	13	14	Total Volume
Bin Class	Cycles	Cars + Trailer	2 Axle Long	Bus	2 Axle 6-Tire	3 Axle Single	4 Axle Single	4 Axle Double	5 Axle Double	>6 Axle Double	<6 Axle Multi	6 Axle Multi	>6 Axle Multi	Unclassified	Total Volume
Survey Total	6	602	135	0	58	0	0	0	0	0	0	0	0	19	820
% Total	0.7%	73.4%	16.5%	0.0%	7.1%	0.0%	0.0%	0.0%	0.0%	0.0%	0.0%	0.0%	0.0%	2.3%	100%
Accumulated %	0.7%	74.1%	90.6%	90.6%	97.7%	97.7%	97.7%	97.7%	97.7%	97.7%	97.7%	97.7%	97.7%	100.0%	
Inv. Accum. %	99.3%	25.9%	9.4%	9.4%	2.3%	2.3%	2.3%	2.3%	2.3%	2.3%	2.3%	2.3%	2.3%	0.0%	



Classification Descriptions

Bin #	Bin Description
1	Motorcycles
2	Passenger cars, including those with recreational trailers
3	2-axle pick-ups, vans, and RVs, including those with recreational trailers
4	Buses
5	2-axle, 6-tire single units
6	3-axle single units
7	4-axle single units
8	3-axle or 4-axle double unit
9	5-axle double unit
10	6-, 7-, or 8-axle double unit
11	5-axle multiple unit
12	6-axle multiple unit
13	7-or-more-axle multiple unit
14	Vehicles that could not be classified

Site notes: